


1 Set the temperature & pre-condition cargo space

1. Make sure that the container doors are closed.
2. Press  to enter **Container Settings**.
3. Select **Set Temperature**.
4. Set the applicable temperature using **↑** and **↓**.
5. Press **✓** to confirm the temperature setting.
6. Select **Now** and press **✓** to initiate the pre-conditioning.

Wait until **Temperature Control ON** is shown on the display before loading any cargo.


Pre-conditioning to +5 °C (+41 °F) takes less than 60 minutes in ambient -5 to +25 °C (+23 to 77 °F)



i NOTE!

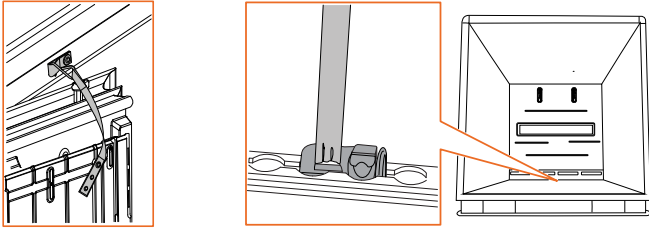
The temperature can only be set before the start of the pre-conditioning. When the container is pre-conditioned, the set temperature is locked and cannot be changed. Turn off the temperature control to restart the setting.

TURN THE TEMPERATURE CONTROL OFF

1. Press  to enter **Container Settings**.
2. Select **Temp Control Off** and press **✓** to confirm.
3. Press and hold buttons **A** and **B** simultaneously for 3 seconds. The time is counted down while holding. Then **Temperature Control OFF** is shown on the display.

Visit www.envirotainer.com for access to User Manuals

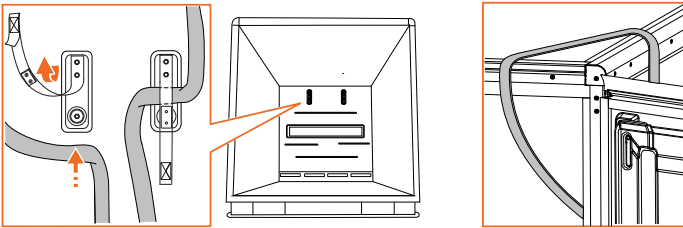
2 Loading products



Open the cargo door(s).

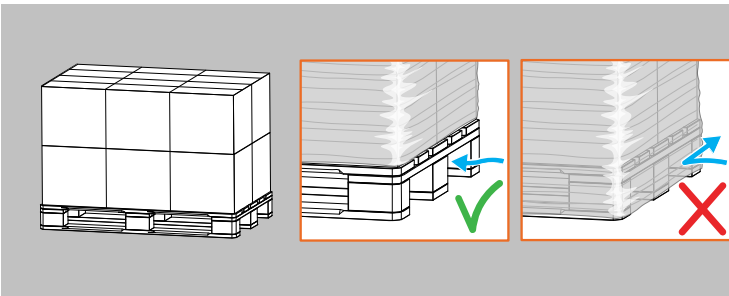
Secure the door with strap.

Fasten one end of the cargo strap in the rear tie-down track.



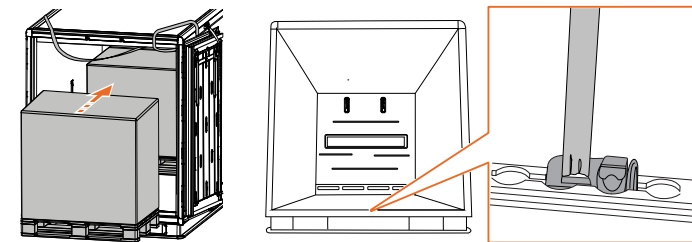
Use the strapholder on the wall to keep the cargo strap out of the way while loading.

Loop other end over of the roof.



! CAUTION!

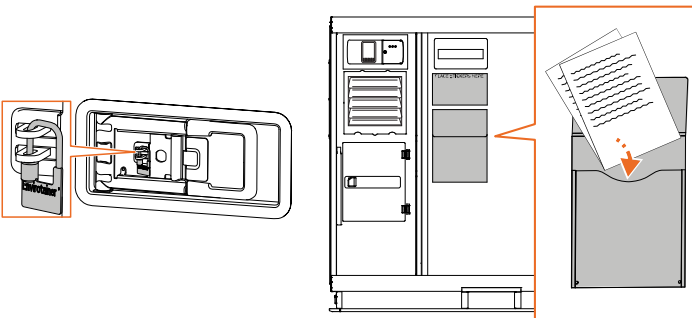
Do not cover the pallet with any wrapping.



Load the cargo.

Fasten the end of the cargo strap in the front tie-down track.

Tighten the strap.



Close the cargo door(s).

Seal the door handle.

Place the shipping documents or any checklists in the pouch.

Visit www.envirotainer.com for access to User Manuals