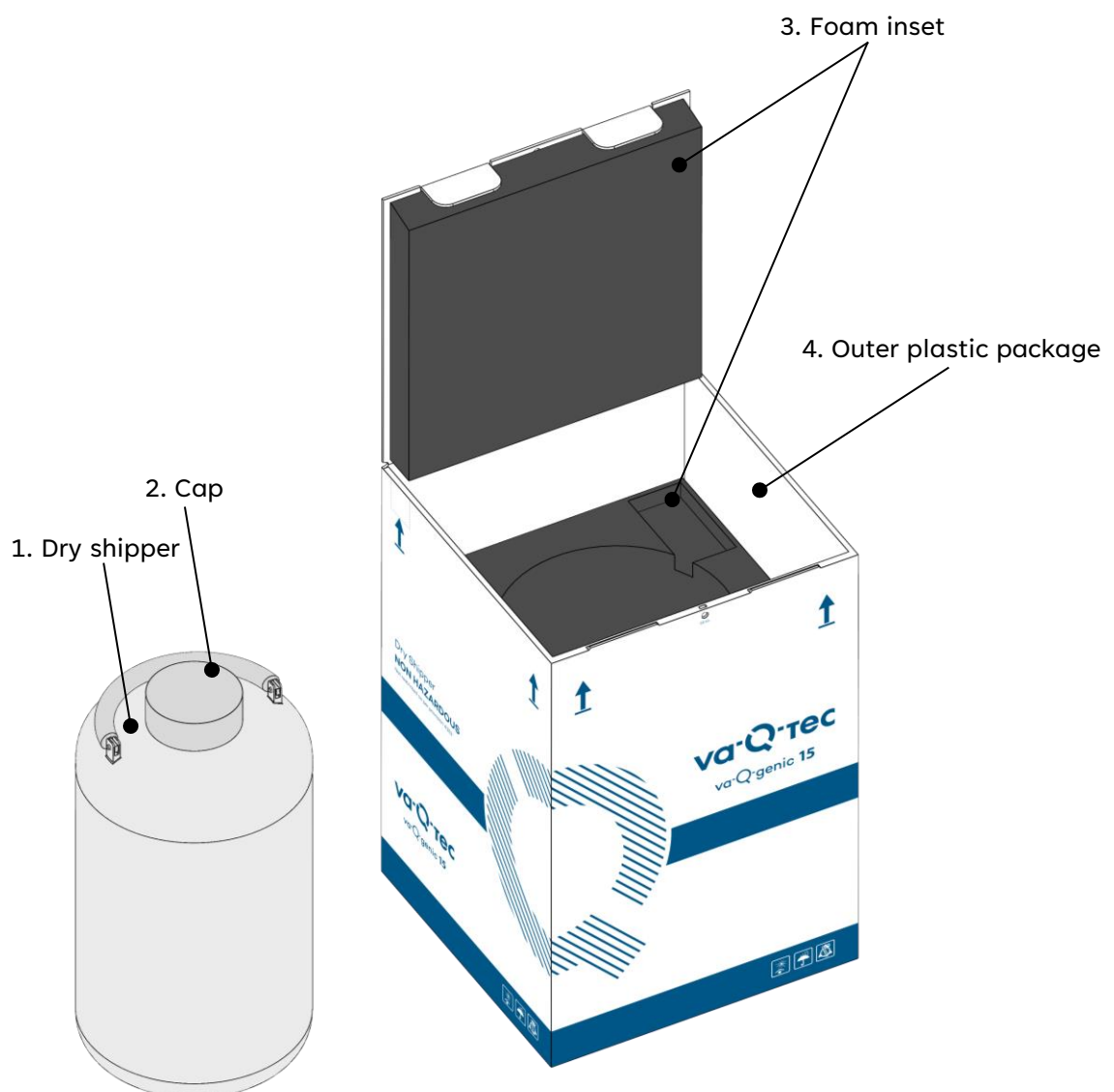


Receive instruction

For va-Q-genic 2, 15, 20

Note: This product shall be stored and transported in upright position!

To ensure a sufficient quality of the va-Q-genic (figure shows exemplarily va-Q-genic 15), it is recommended to carry out the following steps I-IV after each shipment. Furthermore, it is recommended to carry out the thermal integrity check described in step V at least after every three shipments.



Step I

Remove dry shipper from outer package and follow steps II – IV to perform a visual interior and exterior inspection.

If a damage applies, please reach out to va-Q-tec AG:

Email: tempchaininfo@va-q-tec.com

Telephone: +49 931 35942 - 1610

Step II – Dry shipper inspection

Example damages of dry shipper:

- Dents or other damages
- Cap is damaged or missing

If cleaning of the component is necessary, use a suitable cleaner e.g. combined cleaning and disinfection agent based on alcohol. Do not use water to clean the interior of the dry shipper.

Step III – Foam inset inspection

Example damages of foam inset:

- Foam inset damaged
- Foam inset is loose or missing

If cleaning of the component is necessary, use a suitable cleaner e.g. combined cleaning and disinfection agent based on alcohol.

Step IV – Outer plastic package inspection

Example Damages of outer plastic package:

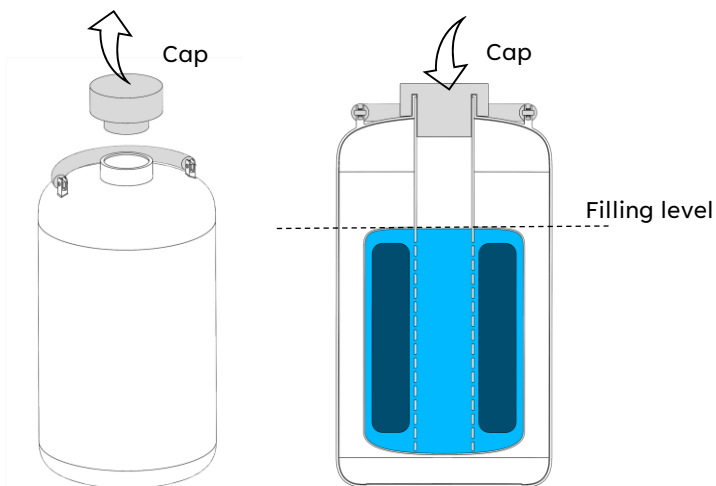
- Outer plastic package displays big slits or deep scratches/holes

If cleaning of the component is necessary, use a suitable cleaner e.g. combined cleaning and disinfection agent based on alcohol.

Step V – Dry shipper thermal integrity check (minimum after every 3 shipments)

Remove dry shipper from outer package and follow the following steps to perform a thermal integrity check of the dry shipper.

1. Remove cap. Fill in liquid nitrogen to the shown filling level. Please follow the va-Q-genic charging instruction. Put cap back on. Please note that it can occur that the cap is floating on the liquid nitrogen and is not unusual. Do not push the cap in that case.



2. Wait for at least 9 hours and maximum 48 hours.

Determine Weight A (*Weight of the charged dry shipper after filling*)
 Please note, the scale should be accurate to 1 gram.

3. Wait minimum 3 hours and maximum 24 hours.

Determine Weight B.
 Please note, the scale should be accurate to 1 gram.

4. Determine the daily weight loss (= DWL)

$$DWL = (Weight A - Weight B) * \frac{24 \text{ hours}}{\text{duration (Waiting Time Step 3)}}$$

5. The daily weight loss must be less than or equal to the following values. If this is the case, you can reuse the dry shipper for next charging process. If your values are above the below values, please contact va-Q-tec AG:

Email: tempchaininfo@va-q-tec.com

Telephone: +49 931 35942 - 1610

	va-Q-genic 2	va-Q-genic 15	va-Q-genic 20
Daily weight loss	< 95 g	< 240 g	< 700 g