

## Loading va-Q-one 300P with va-Q-pads

### Step 1

Open the lid of the va-Q-one 300P.

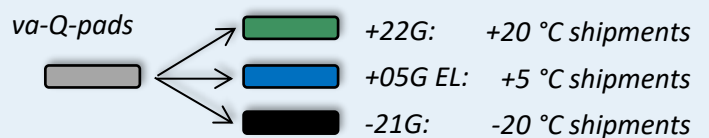
**Note:** Before loading, the va-Q-pads must be preconditioned as per the respective SOP instructions for the desired temperature range.

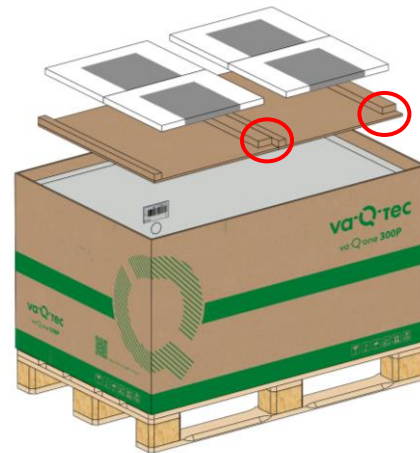
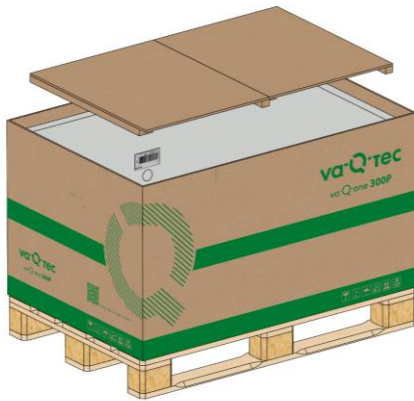
Do not remove the cardboard from the va-Q-pads.



### Step 2

Remove the holder for the top and bottom va-Q-pads as well as the inner carton.





### Step 3a

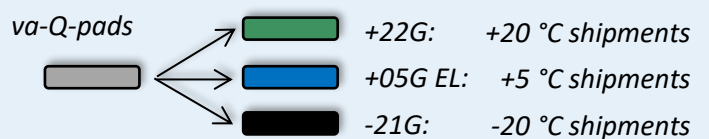
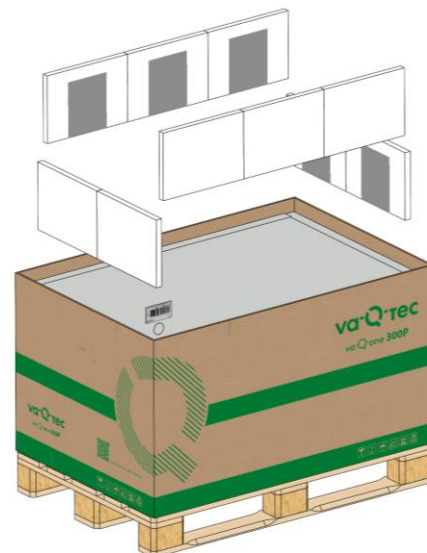
When used with **va-Q-pad +05G EL** or **va-Q-pad +22G** turn over the holder for the va-Q-pads at the bottom to create an even surface.

### Step 3b

When used with **va-Q-pad -21G** place four va-Q-pads -21G 44342 into the predetermined sections of the holder. Ensure that the cutouts are on the same side.

### Step 4

First, load two va-Q-pads 34242 on each short side and then place three va-Q-pads 34242 on each long side.



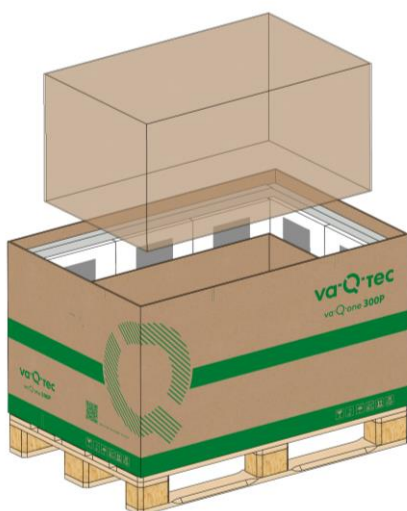
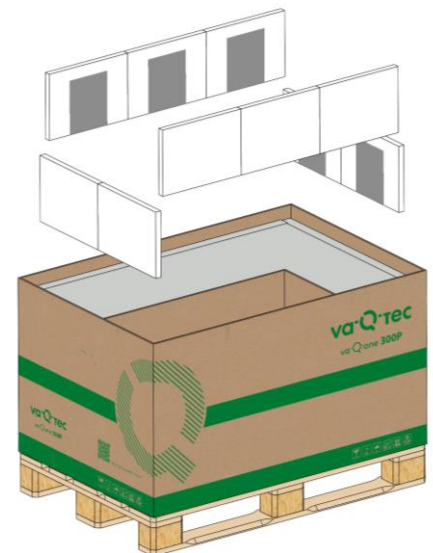


**Step 5**

Place the inner carton inside the va-Q-one 300P. The va-Q-pads loaded surround the inner carton.

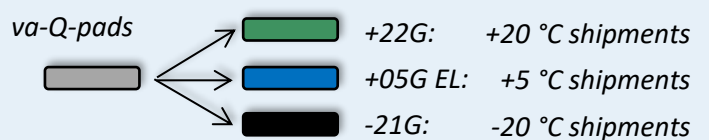
**Step 6**

First, load two va-Q-pads 34242 on each short side and then place three va-Q-pads 34242 on each long side. A second row of va-Q-pads surrounds the inner carton.



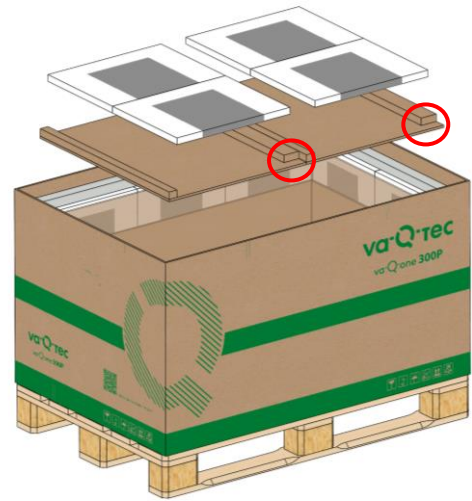
**Step 7**

Place the product into the inner carton of the va-Q-one 300P.



### Step 8

Place the holder for the top va-Q-pads onto the upper edge of the va-Q-pads loaded. Ensure that the cutouts are on the same side. Place four va-Q-pads 44342 into the predetermined sections of the holders.



### Step 9

Close the va-Q-one 300P. Make sure that the edge protectors of the lid surround the carton so that the box is closed properly.

### Step 10

Strap the va-Q-one 300P twice on each side. Visible marks help to strap at the right position.

